

AUTEL MAXIIRT IR100

ADVANCED INFRARED DIAGNOSTICS

SEE MORE DETAIL WHEN IT MATTERS MOST



IR100 DETECT HEAT BUILDUP AND FLUCTUATION WITH ACCURATE TEMPERATURE DIFFERENTIAL



DUAL IMAGING

OVERLAY ACTUAL VIDEO AND INFRARED HOT SPOT



MULTI-SPOT METERS

• PINPOINT TARGET READING
• ROAMING HIGH AND LOW



PRECISE SENSITIVITY

• 0.07°C ACCURACY
• 450°C TO -20°C TEMP RANGE



WORKSITE TOUGH

• RUGGED DROP RESISTANT
• BUILT TO LAST DURABLE



TEL: 855.288.3587 • EMAIL: USSUPPORT@AUTEL.COM
AUTEL.COM • MAXITPMS.COM • MAXISYSDAS.COM
©2020 AUTEL U.S. INC., ALL RIGHTS RESERVED



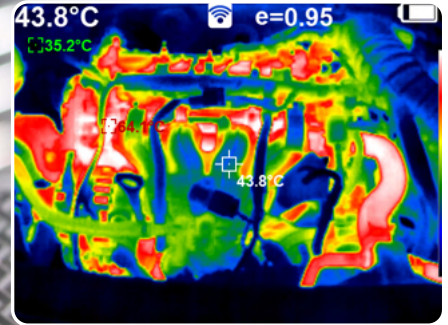
AUTEL®

AUTEL MAXIIRT IR100 ADVANCED THERMAL IMAGING DIAGNOSTICS

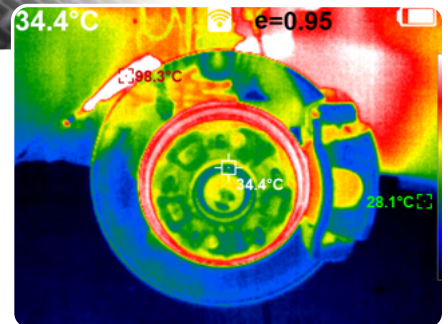


FIND MECHANICAL OR ELECTRICAL HEAT PATTERNS

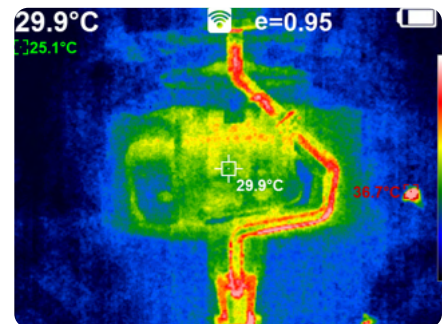
- **5-COLOR PALETTE**
WHITE, RED, YELLOW, BLUE, BLACK
- **TOUCH-LESS TARGETING**
NON-CONTACT TEMPERATURE READING
- **AUTO-FOCUS**
INSTANT THERMAL CLEAR IMAGING
- **RECHARGEABLE**
5,000 MAH BATTERY / 4HR CONSTANT USE



ENGINE SYSTEM



BRAKING SYSTEM



EXHAUST SYSTEM



TECHNICAL SPECS

DISPLAY SCREEN	3.5" TFT Display	STORAGE CAPACITY	8G
INFRARED IMAGE	320 x 240	WORKING TIME	4 Hours
LCD RESOLUTION	640 x 480	LANGUAGE	English/Chinese/German/Italian
THERMAL SENSITIVITY	0.07°C	PRODUCT SIZE (LxWxH)	10.1 x 3.8 x 5.1 Inch
FRAME RATE OF THERMAL IMAGES	9Hz	PRODUCT WEIGHT	588g
EMISSIVITY	Adjustable 0.01 to 1.00	WORKING TEMPERATURE	0°C to 45°C (32°F to 113°F)
WIDE TEMPERATURE MEASUREMENT RANGE	-20°C to 450°C (-4°F to 842°F)	FIELD ANGLE	56° x 42°



TEL: 855.288.3587 • EMAIL: USSUPPORT@AUTEL.COM
 AUTEL.COM • MAXITPMS.COM • MAXISYSDAS.COM
 ©2020 AUTEL U.S. INC., ALL RIGHTS RESERVED



AUTEL®